

# 2023 ANNUAL REPORT

July 2022 - June 2023



GLOBAL IMPACT

# Overview

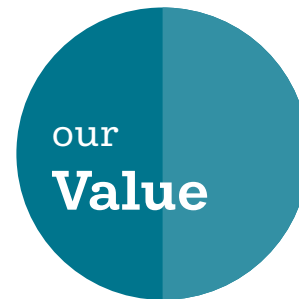
Global Impact serves as a trusted philanthropy advisor, intermediary, and nonprofit partner for greater giving. We offer advisory and infrastructure services that drive strategic philanthropy for our nonprofit, public, and private sectors clients. With close to 70 years of experience, we have raised nearly \$2.5 billion with our partners for global causes. Global Impact is a part of Global Impact Ventures, a family of mission-driven organizations serving all of philanthropy for a better world.



Inspire greater giving

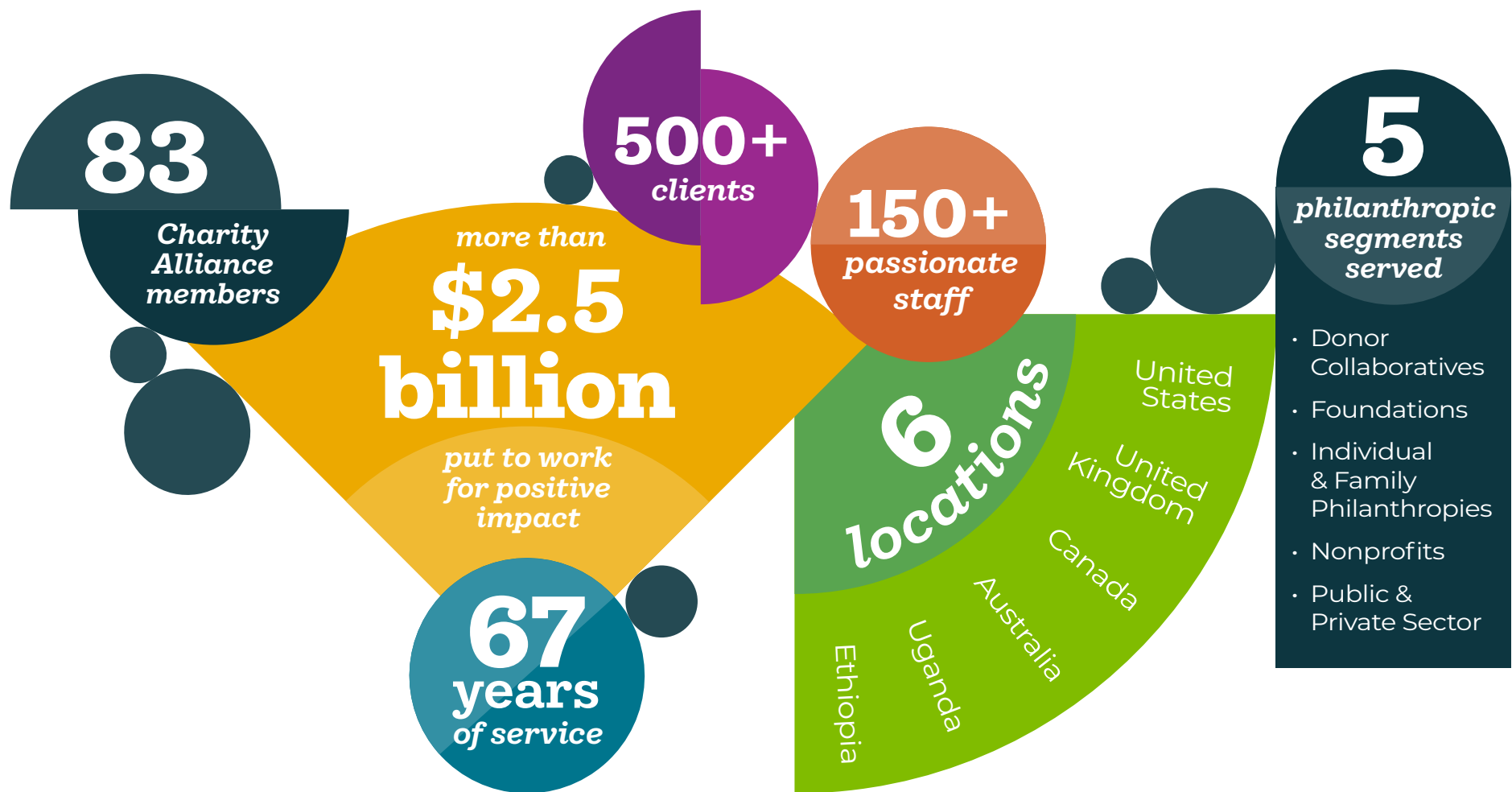


Unleash the full potential of the philanthropy sector to transform lives



We are philanthropy advisors who put mission first

# *By the Numbers*



# Highlights



*Launched Global Impact Ventures, a family of organizations serving all of philanthropy for a better world, in late 2023.*



## GLOBAL IMPACT

- Generated \$13.4 million for our Charity Alliance members in public and private sector workplace campaigns.
- Distributed over \$500,000 to charity members for the Ukraine Response Fund.
- Provided critical leadership for the 2022 Combined Federal Campaign (CFC) through strategic management, marketing, and fundraising implementation, resulting in more than \$72.6 million raised in monetary and volunteer pledges for CFC charities.
- Partnered with Action Against Hunger on fundraising efforts, including filling critical revenue-generating staff roles across the corporate, foundation, and major gift teams, supporting the organization in a record-breaking year that yielded over \$20M in private donations.
- Provided organizational, fiscal, and fundraising support to a donor collaborative, including facilitating grantmaking of over \$4.5M to grantees focused on gun violence prevention efforts in the United States.
- Served as a fiscal sponsor to 75 clients with over \$100 million in assets.



## GENEVA GLOBAL

- Helped multiple generations of a family collectively make grants to leading democracy organizations in the United States and girls' education efforts in South America.
- Advised government partners in Ethiopia on education sector reconstruction efforts following a civil conflict.
- Supported some of the world's largest private foundations in their efforts to pool and deploy catalytic philanthropic capital.
- Helped CARE codify and disseminate a global "playbook" for taking a systems change approach to their work at the country level.
- Supported a leading philanthropy in the Middle East to convene hundreds of peer donors for a pledging moment to accelerate giving in a traditionally neglected sector.
- Advised a leading corporate foundation on ways to embrace experimental methods of grantmaking to accelerate the volume of their giving.



## CAPITAL FOR GOOD

- Continued to support the Girls First Fund in its mission to support grassroots partners and programs that work to end child marriage globally.

# Financials

## **Statement of Financial Position**

Total Assets	\$160,038,011
Total Liabilities	\$22,632,809
Total Restricted Assets	\$124,425,305
Total Unrestricted Net Assets	\$12,979,897
<hr/>	
<b>Total Liabilities and Net Assets</b>	<b>\$160,038,111</b>

## **Summary of Total Contributions and Revenue**

<b>Total Contributions</b>	<b>\$145,207,508</b>
Giving for International and Domestic Assistance Programs	\$26,203,977
Workplace Giving	\$399,494
Funds Program	\$117,666,978
Donor-Advised Funds	\$937,059
Other Contributions	\$0
<b>Other Revenues</b>	<b>\$17,294,266</b>
<hr/>	
<b>Total Contributions and Revenues Raised</b>	<b>\$162,501,774</b>

*NOTE: This analysis reports contributions before shrinkage and third-party expense.*

# Financials

## ***Statement of Distributions and Operating Expenses***

<b>Total Distributions to Charities</b>	<b>\$56,027,714</b>
Other Distributions for International & Domestic Assistance Programs	\$40,508,326
Workplace Giving Campaigns	\$11,485,485
Other Fund Distributions	\$1,000
Donor-Advised Funds	\$1,144,965
Capital for Good	\$2,887,938
 <b>Total Program Expense</b>	 <b>\$33,199,561</b>
Campaign Solutions	\$1,504,640
Partner and Programmatic Solutions	\$4,124,814
Fiscal Sponsor Programmatic Expenses	\$15,841,224
Donor Advised	\$913,252
Geneva Global	\$10,153,777
Capital for Good	\$2,488,358
 <b>Total Support Services Expense</b>	 <b>\$3,732,149</b>
Management and General	\$2,655,129
Fundraising	\$1,077,020
 <b>Total Program and Support Services Expense</b>	 <b>\$36,931,710</b>
 Administrative Fee on Operating Expenses	 4.2%

NOTE: Financials represent Global Impact and its affiliates.

# *Board of Directors*

ANITA WHITEHEAD

***Board Chair***

JAMES B. KANUCH, CPA, CFE

***Board Treasurer***

M. MOUCTAR DIALLO

***Board Secretary***

KENNETH SCHANER, ESQ.

***General Counsel***

SCOTT JACKSON

***President & Chief Executive Officer***

ERIK ARNOLD

KATHRYN COMPTON

LISA TREVIÑO CUMMINS

STAN HARRELL

VEENA JAYADEVA

SARAH DEGNAN KAMBOU

CHRISTIN CARDONE MCCLAVE

DR. CHARLES OWUBAH

STEVE POLO

KAREN WAWRZASZEK

DAVID WU

# *Senior Executive Team*

SCOTT JACKSON

*President & Chief Executive Officer*

VICTORIA E. ADAMS

*Vice President of Combined Federal Campaign Administration*

BRITTANY MATTFELD CRAIG

*Managing Director of Campaign Engagement*

CHRISTINA HADDEN

*Managing Director of Finance & Accounting*

NATHANIEL HELLER

*Vice President & Managing Director*

STEPHANIE SCHOLZ

*Vice President of Human Resources*

*Senior Executive Team as of January 2024*





# GLOBAL IMPACT

*charity.org*